

2019 Club Class Nationals



Pilot Kit

Online

[CONTEST SSA PAGE](#)

[CONTEST WEBSITE](#)

[CONTEST FACEBOOK](#)

Sponsors – Silver Level

VOGTS

CONSTRUCTION COMPANY

“Building Your Dreams With Excellence”

VogtsConstruction.com

316-282-2400

VOGTS

VOGTS-PARGA CONSTRUCTION, LLC

PARGA

316-284-2801

“Concrete & Drainage Specialists”

vogtsparga.com

Sponsors – Bronze Level



Schedule

June 2nd – 1st Practice Day

- Registration & Weighing All Day
- 10:00 AM: Pilot's Meeting - Ops Building
- 12:00 PM: Grid

June 3rd – 2nd Practice Day

- Registration & Weighing All Day
- 10:00 AM: Pilot's Meeting - Ops Building
- 12:00 PM: Grid
- 6:30 PM: Opening Ceremony & Ops Building Dedication
- 7:00 PM: Dinner provided by Sunflower Soaring Foundation – Ops Building
- 7:30 PM: Mandatory Safety Meeting – Ops Building

June 4th - 1st Contest Day

- 10:00 AM: Pilot's Meeting – Pilot's Meeting – Ops Building
- 12:00 PM: Grid

June 5th – 2nd Contest Day

- 10:00 AM: Pilot's Meeting – Pilot's Meeting – Ops Building
- 12:00 PM: Grid

June 6th – 3rd Contest Day

- 10:00 AM: Pilot's Meeting – Pilot's Meeting – Ops Building
- 12:00 PM: Grid

June 7th – 4th Contest Day

- 10:00 AM: Pilot's Meeting – Pilot's Meeting – Ops Building
- 12:00 PM: Grid
- After Flying –Paul Sodamann's Pulled Pork & KSA member cookout at Sunflower

Schedule

June 8th – 5th Contest Day

- 10:00 AM: Pilot's Meeting – Pilot's Meeting – Ops Building
- 12:00 PM: Grid

June 9th – 6th Contest Day

- 10:00 AM: Pilot's Meeting – Pilot's Meeting – Ops Building
- 12:00 PM: Grid

June 10th – 7th Contest Day

- 10:00 AM: Pilot's Meeting – Pilot's Meeting – Ops Building
- 12:00 PM: Grid
- 7:00 PM: Dinner at Sunflower

June 11th – 8th Contest Day

- 10:00 AM: Pilot's Meeting – Pilot's Meeting – Ops Building
- 12:00 PM: Grid

June 12th – 9th Contest Day

- 10:00 AM: Pilot's Meeting – Pilot's Meeting – Ops Building
- 12:00 PM: Grid

June 13th – 10th Contest Day

- 10:00 AM: Pilot's Meeting – Pilot's Meeting – Ops Building
- 12:00 PM: Grid
- 6:30 PM: Banquet at Operations Building

Your Hosts

Kansas Soaring Association
Tony Condon- President
Cell – (515)-291-0089

Wichita Soaring Association
Jerry Boone - President
Cell - (620) 474-4177

Sunflower Soaring Foundation
Bob Hinson – President
Cell – (316) 841-5561
Andrew Peters - Member
Cell - (316) 393-2261

Key Contest Personnel

Hugh Grandstaff
Contest Director

Tony Condon
Contest Manager
Cell - (515) 291-0089

Michael Groszek
Scorer
mig82au@gmail.com

Kimmine Hudson
Registration

Paul Sodamann
Ground Operations

Getting Here

From Wichita to Sunflower Gliderport

- West on K-96
- Left on Halstead Road (First Left after Yoder)

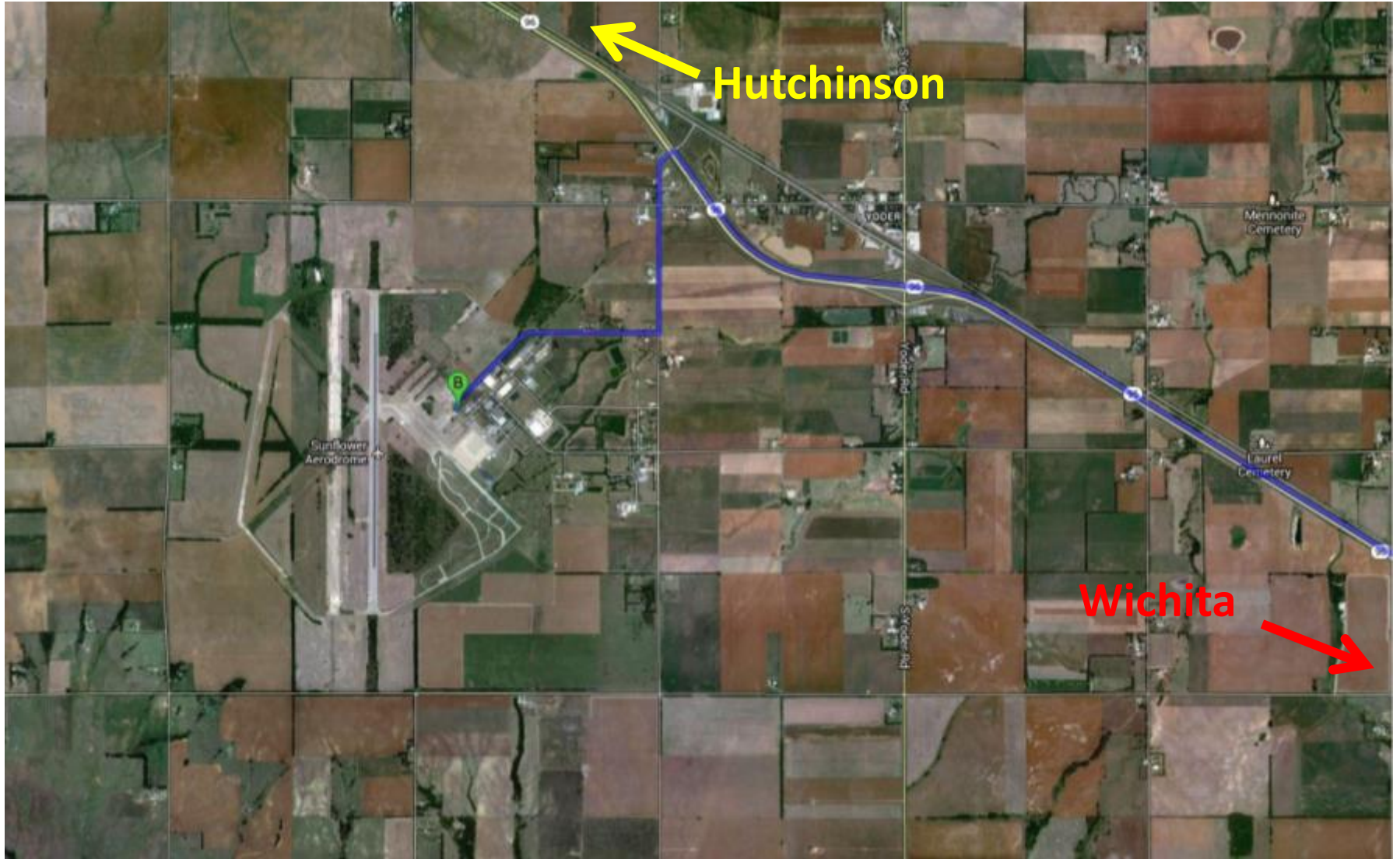
From Hutchinson to Sunflower Gliderport

- East on K-96
- Right on Halstead Road (Just before Yoder)

Then...

- Go one-half mile South
- Turn Right on Ranger Road
- Follow Ranger Road, turns into Langley
- Entrance on the right after 90 degree curve left
- Look for KSA & SSA signs on Hangar

Getting Here



Yoder, KS



Local Attractions

Kansas Cosmosphere
and Space Center

<http://www.cosmo.org/>



Strataca

<http://underkansas.org/>



Local Attractions

Kansas Aviation Museum
McConnell Air Force Base Wichita KS
<http://kansasaviationmuseum.org>



Local Attractions

<https://www.b29doc.com/>



Pilot's Meetings

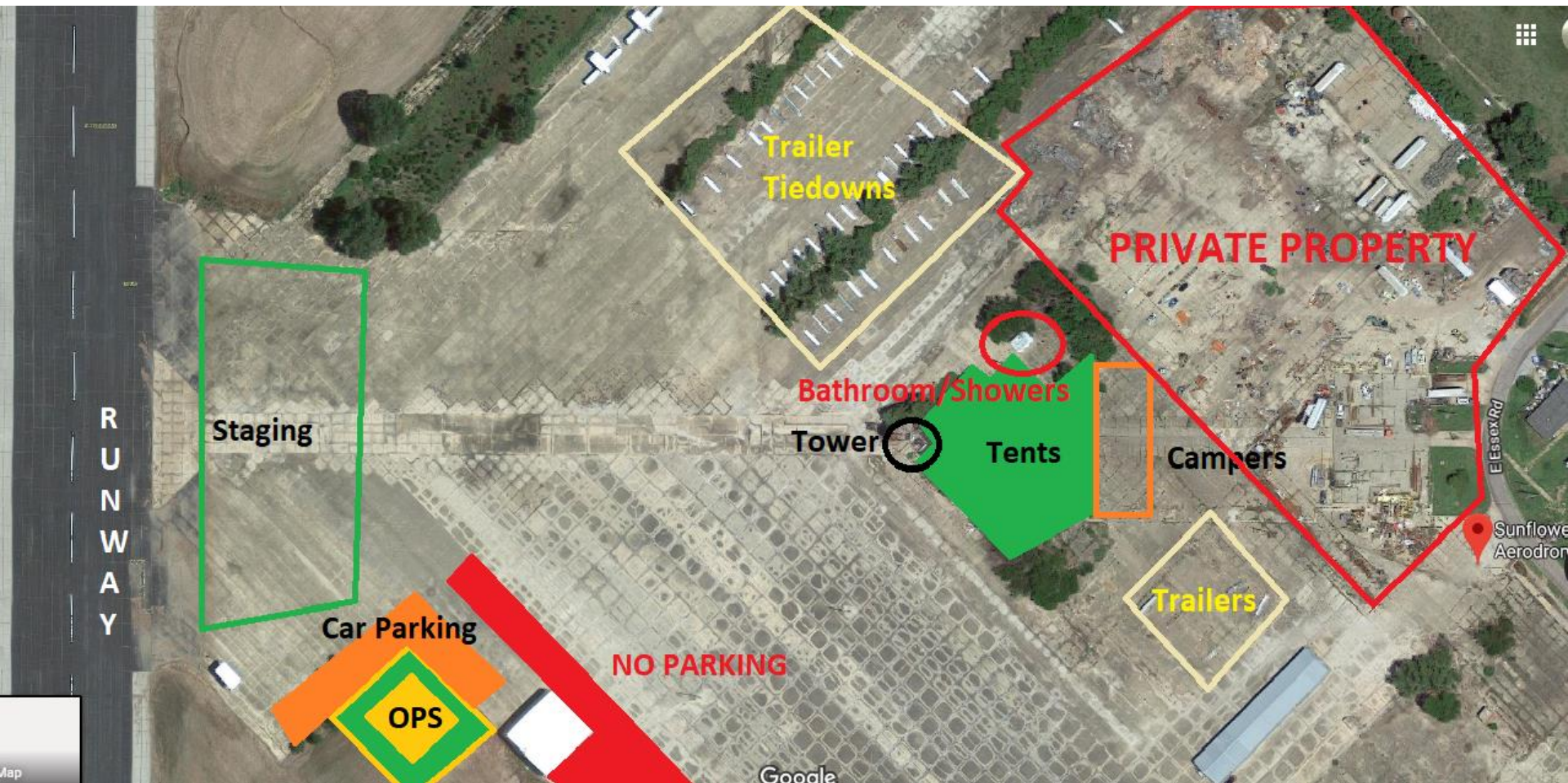
Daily Pilot's Meetings and the Safety Meeting will be held at the brand new Operations Building at Sunflower



Field Operations

- Sunflower is a Private airport used primarily for glider operations.
- We will probably have some contest related airplane traffic in the mornings
- Keep an eye out for traffic in bound to Wichita Mid Continent and Hutchinson Airports
- You must provide your own tie out gear for trailers and gliders. Tie down rings are set in the concrete
- Park trailers in any open spot
- Gliders can be tied out overnight if desired, at or near your Trailer.
- In the event of Severe Weather, the rooms in the base of the tower or the bathroom in the Operations Building are the best place for protection.

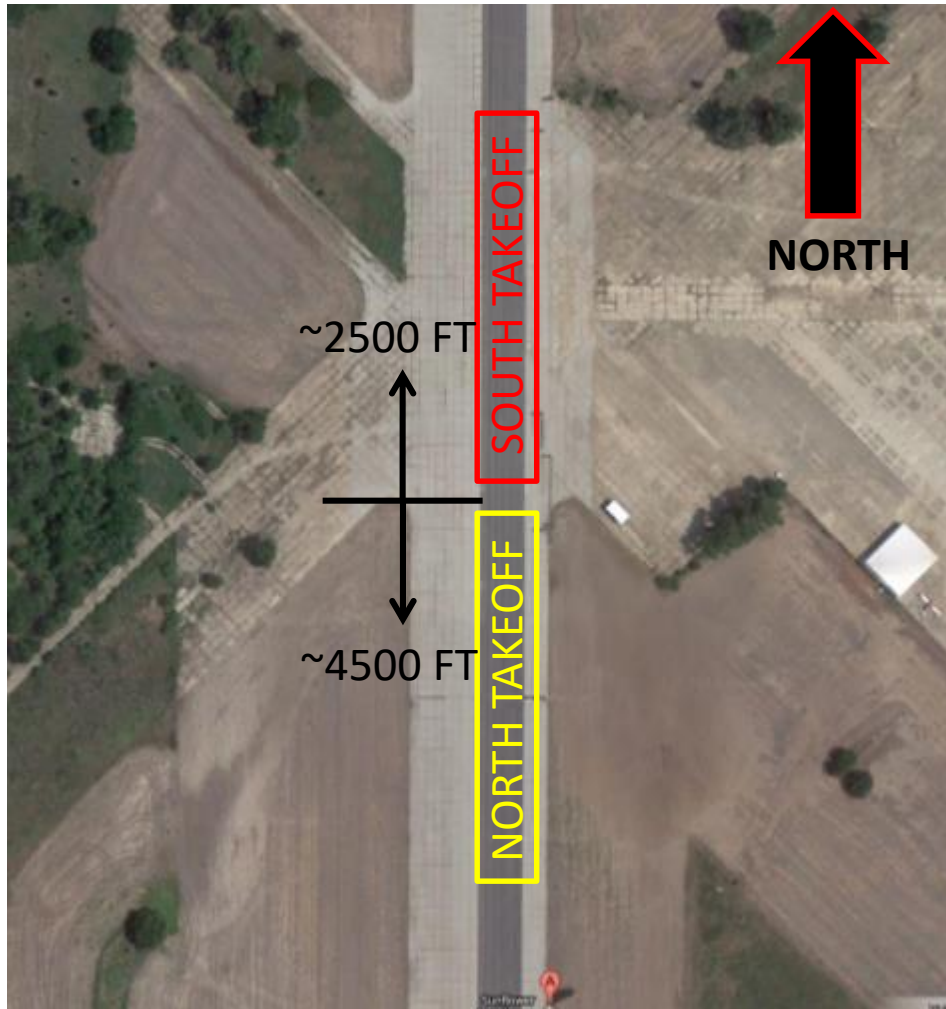
Field Operations



Field Operations

- Do not park glider trailers or assemble gliders on the Ramp/Staging Area
- Do not tie gliders out overnight on the Ramp/Staging Area
- Do not park vehicles on the asphalt surface of the Ramp/Staging Area . Vehicles should be parked along the treeline to the east of the Ramp

Grid Procedures



- **Grid positions will be marked on the Runway**
- **Gliders on East half of runway, Towplanes taxi on West half**
- **Grid for takeoff in either direction will start at the South end of the ramp**

Field Operations

- Sunflower has one runway, 17/35, 7000x200ft
- Watch for conflicting traffic. Keep your eyes outside the cockpit!
- *Be aware of the Tall Trees at both ends. Fly over or around them.*
- Do not land on the ramp.
- Left hand patterns if possible, otherwise announce
- If possible when landing, land with enough energy to clear the runway at the ramp
- Landing short or long is OK. Someone will come get you
- Expedite moving your glider off to the side to give others room to clear the runway behind you.

Radio Frequencies

- 123.5 on tow and within 10 miles of Sunflower if below 2000 AGL
- 123.5 contest frequency above 2000 AGL and for start opening
- Wichita Approach
 - 126.7
- Hutchinson Tower/ATIS
 - 118.5/124.25

Retrieval Procedures

- Retrieve office is located in the Operations Building
- Contact number on Task Sheet
- Retrieve office will remain open until all gliders are on the ground and crews have been dispatched to retrieve all landouts
- Retrieve Office will be available until at least 5 pm CDT
- Crew **MUST** notify the Retrieve Office if they are leaving the airport for any reason

Retrieval Procedures

- You should provide your own retrieve crew.
- You may partner with another competitor
 - May slow your retrieve
 - Complicates matters if you both land out
- All Pilots and Crews must provide Cell Phone #'s before the beginning of the contest

When You Land Out

- Provide following information
 - Name of the landing place
 - Is this an airfield?
 - If not, latitude and longitude
 - Condition of glider and pilot
- Any extra assistance required
 - Retrieve instructions
- If the pilot is at an airfield, would he like an aerotow retrieve?
- If not, what are the driving directions?

When You Land Out

Pilot Outlanding Form		SSA SC38 10
COMPLETE BEFORE CALLING RETRIEVE OFFICE Promptly upon landing at any place other than the home airfield, a pilot must complete this form then telephone the contest Retrieve Office. <i>Please have this card fully filled out and in hand when you call.</i>		Contest ID
Retrieve Office Phone Number		
Pilot Name		
Time of Landing	Name of Landing Place	
Is this a designated Airfield? <input type="checkbox"/> Yes <input type="checkbox"/> No	If NO, supply Latitude and Longitude: LAT LON	
Pilot Contact Telephone Number		
Control Points Claimed (in order completed)		
Retrieve Instructions (use back if necessary)		

SSA SC38 09 4/25/09 Pilot Outlanding Form

- Secure the safety of the glider and personnel first
- As soon as it is safe to do so, complete the Outlanding Form to report control points claimed in the order in which they were completed

When You Land Out

- You may contact the Retrieve Coordinator or you may contact your retrieve crew directly
- Retrieve crew **MUST** notify Retrieve Coordinator office as soon as they know you landed out
- Retrieve crew **MUST** check out with retrieve office before they leave the field
 - **PLEASE** let us know if any delay is expected

- Designated Airfields

- Any field listed as an Airport in the Database is a Designated Airfield

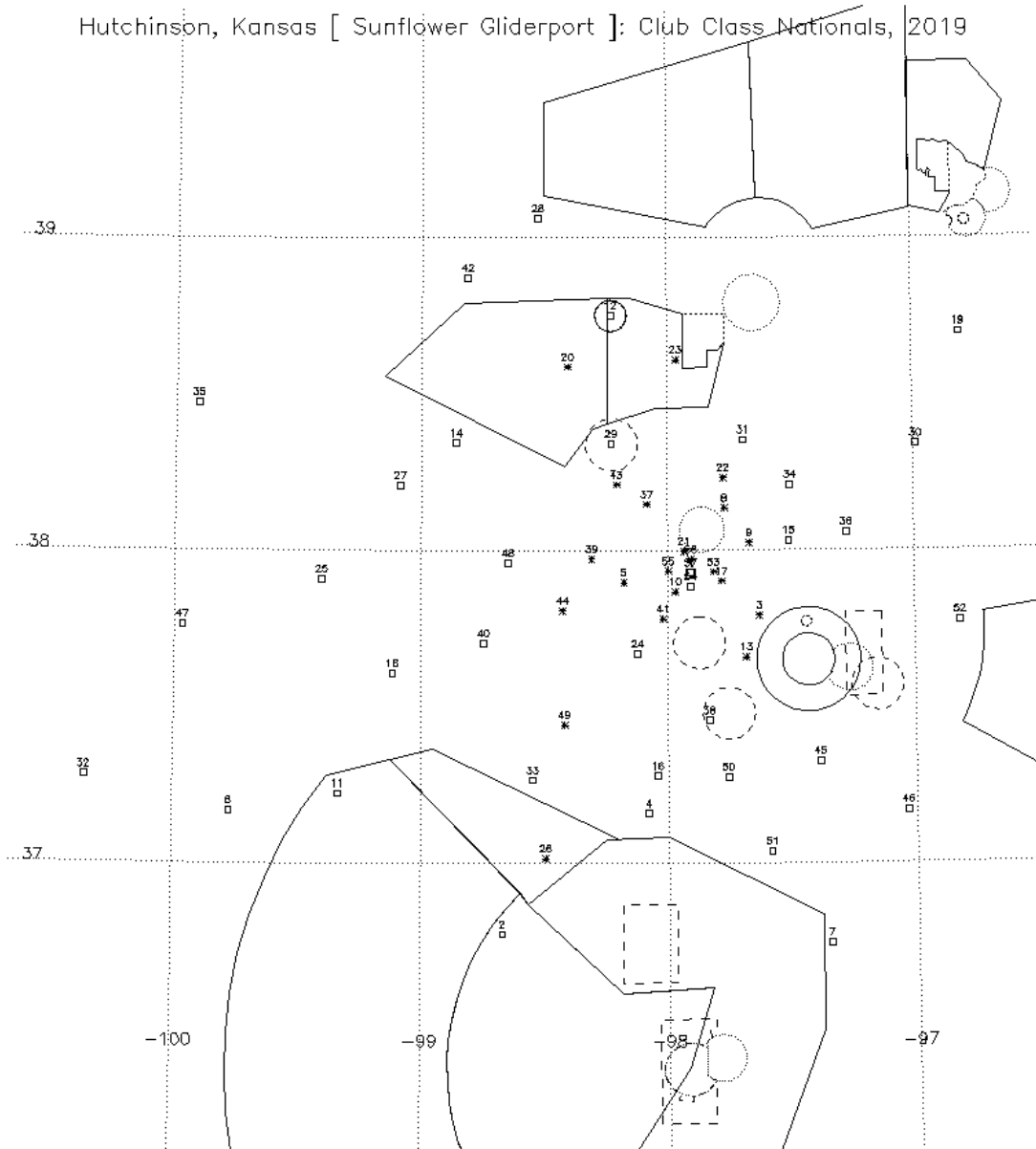
- Databases

- Turn Point and Closed Airspace Files

- [http://soaringweb.org/TP/Hutchinson contests](http://soaringweb.org/TP/Hutchinson_contests)

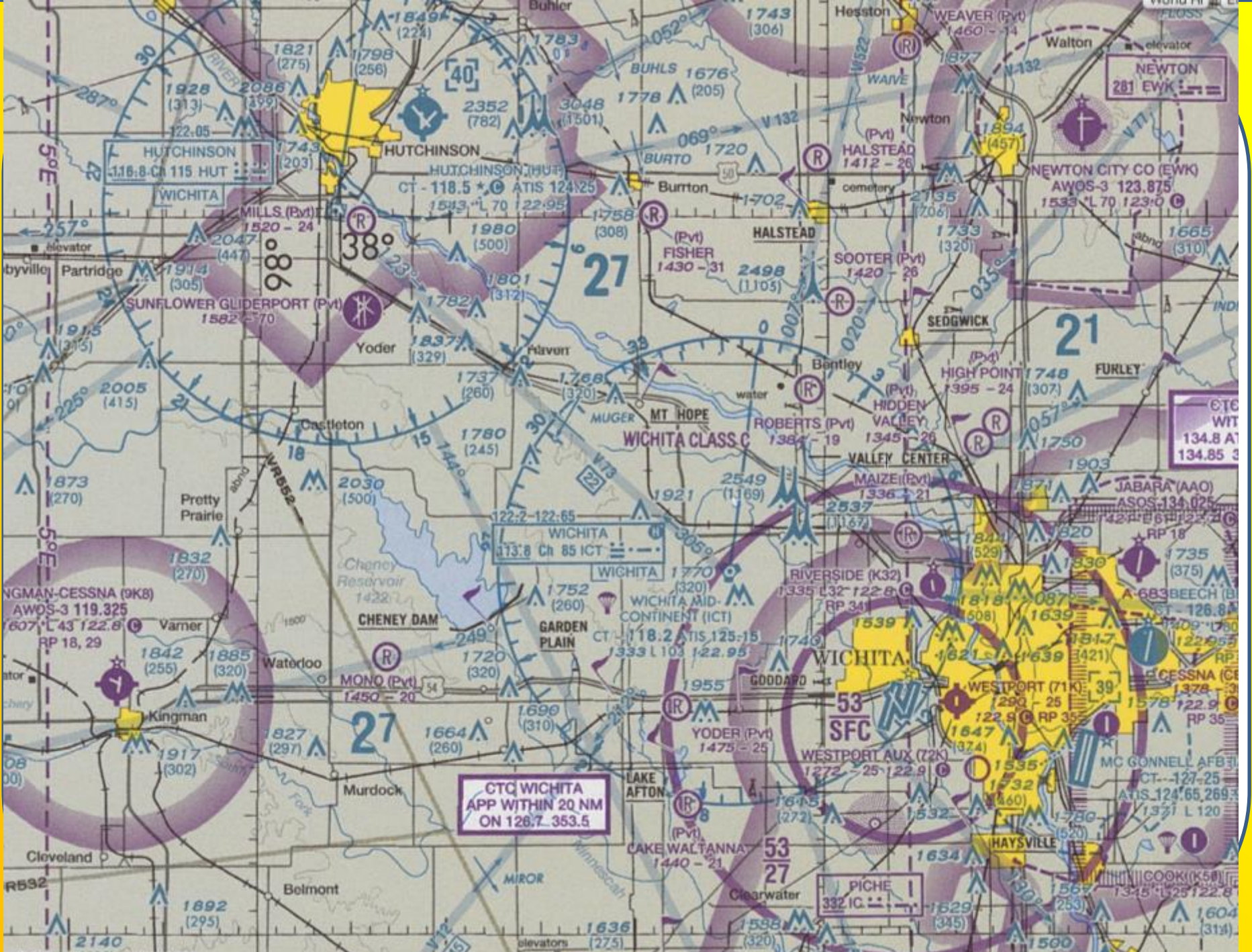
Control Points

Hutchinson, Kansas [Sunflower Gliderport]: Club Class Nationals, 2019



Airspace

- Wichita Mid Continent Airport (Class C) is located 27.9 nm southeast of Sunflower
- Hutchinson Municipal Airport (Class D) is located 9 nm north of Sunflower
- Arriving jet traffic from the west into Mid Continent is typically at 10,000 feet over Sunflower
- Business Jet test flights often use Instrument Approaches at Hutchinson which puts them at low altitudes very close to Sunflower
- The Hutchinson VOR is 4.4 nm north of Sunflower



CTQ WICHITA
APP WITHIN 20 NM
ON 126.7 353.5